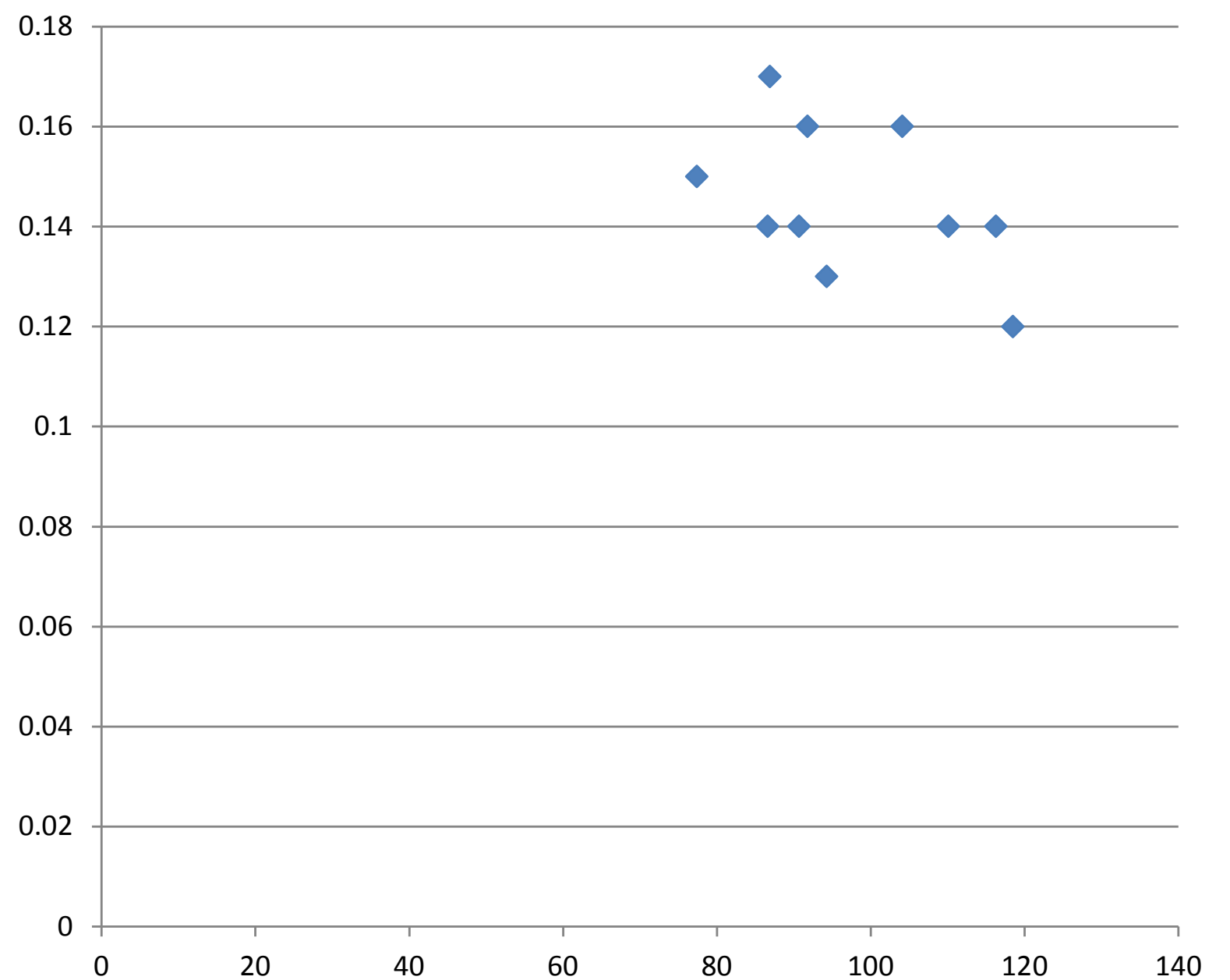


Durability

- Heat-resistant of rim provides more safety for riders.
- RXT rim brake heat test (Right image) with conditions: distance : 6 km / Cable loading 3 kgf. Brake wall temperature over 100 °C, the variation of rim width less than 0.3mm.
- X-axis: Temperture(°C)
- Y-axis: Variation of rim width (mm)

The variation of rim brake heat test



Rims Testing Report

1	Wheel - Rotational accuracy Concentricity/Lateral tolerance"	requirement	(STD/REF)	Standard	Lateral $\leq 0.3\text{mm}$	Radial $\leq 0.4\text{mm}$	Centering $\leq 0.2\text{mm}$	Spokes tension max-min $\leq 0.3\text{mm}$										
		CT	STD	Testing result	0.17			0.3			0.2					State		
				Spokes tension	1	2	3	4	5	6	7	8	9	10	11	12	<input checked="" type="checkbox"/> Pass <input type="checkbox"/> DNP	
				Left side	2.30	2.30	2.35	2.22	2.35	2.29	2.25	2.33	2.25					
Right side	2.18	2.30	2.30	2.20	2.31	2.29	2.21	2.31	2.32									
2	Rim - Tyre inflation	requirement	(STD/REF)	Standard	150psi - 0 psi $\leq 0.5\text{mm}$; 150psi - 0 psi max-min $\leq 0.2\text{mm}$												Result	
		CT	STD	item	1	2	3	4	5	6	7	8	9	10	11	12	<input checked="" type="checkbox"/> Pass <input type="checkbox"/> DNP	
				0psi	20.58	20.56	20.56	20.59	20.57	20.57	20.57	20.58	20.59	20.57	20.56	20.56		
				120psi	20.70	20.68	20.66	20.69	20.66	20.68	20.66	20.69	20.65	20.70	20.66	20.69		
				135psi/5min	20.70	20.68	20.70	20.72	20.72	20.68	20.68	20.70	20.68	20.72	20.68	20.72		
150psi	20.74	20.74	20.72	20.72	20.74	20.74	20.72	20.74	20.74	20.74	20.76	20.72	20.72					
3	Wheel/tyre assembly - Drum test	requirement	(STD/REF)	Standard	Slot height 10mm x 6pcs / speed 25Km/hr / distance 450Km / tire pressure 108psi w/o crack												State	
		CT	STD	Spoke model	CN ψ 2.0												<input checked="" type="checkbox"/> Pass <input type="checkbox"/> DNP	
				Tyre model	maxxis 700x23C													
				item	1	2	3	4	5	6	7	8	9	10	11	12		
				Spokes tension(reference)	2.21	2.32	2.32	2.22	2.30	2.31	2.21	2.35	2.35					
					2.32	2.36	2.39	2.14	2.38	2.29	2.24	2.35	2.28					
Rim width(reference)	20.62	20.63	20.68	20.64	20.60	20.62	20.64	20.64	20.62	20.66	20.66	20.66						
4	EN Wheel/tyre assembly - Static side stiffness test	requirement	(STD/REF)	Standard	Parent distortion < 1mm												State	
		ISO4210	STD	Testing condition	Max. Loading: 250 N / Loading time: 1min / max inflation pressure/23C												<input checked="" type="checkbox"/> Pass <input type="checkbox"/> DNP	
				Testing result	Parent distortion 0.05 mm													
5	Spoke hole pull out test	requirement	(STD/REF)	Standard	Spokes tension average $\geq 255\text{Kgf}$ /other one $\geq 190\text{Kgf}$ w/o crack												Result	
		CT	STD	Testing condition	Rim piece length 14cm w/ spoke(at least 3 pcs)												<input checked="" type="checkbox"/> Pass <input type="checkbox"/> DNP	
				Testing result	1	2	3	4	5	6								
					317	331	297	333	298	333								
					specimen no. - spoke hole no. From vlave hole counterclockwise													
					1-2	2-6	3-8	4-11	5-15	6-17								
average	318 Kgf																	
6	Wheel/tyre assembly - brake heat (Full carbon clincher rim brake road bike rim only)	requirement	(STD/REF)	Standard	yellow king(black prince) brake pad 120psi After-before $\leq 0.3\text{mm}$ 120psi max-min $\leq 0.3\text{mm}$												State	
		CT	STD	Testing condition	wheel loading : 35 Kgf / speed : 24 km/hr / distance : 6 km (15min) / cable loading 3 Kgf												cable loading 3kg pass cable loading 3.25kg pass cable loading 3.5kg pass	
				Testing result	cable loading 3.5KG MAX: 0.26 mm													
7	Impact test(unapproved)	requirement	(STD/REF)	Standard	40J rim w/o crack / UCI rubber pad												Result	
		UCI	STD	Testing result	<input checked="" type="checkbox"/> w/o crack <input type="checkbox"/> w/ crack												<input checked="" type="checkbox"/> Pass <input type="checkbox"/> DNP	